



MODEL

EC2

Everclean 2 Oil Cleaning System



Caution: Read and Understand all Safety and Operating Instructions before using this equipment



Introduction

Highland Park invented the EverClean 2 System to utilize the mineral oil so that it can be used multiple times. It cleans the coolant and removes all the sludge accumulated while running a Slab Saw, a Core Drilling Machine or Shaping Machine. With an EverClean 2 system, the saw can be kept clean easily, and gallons of mineral oil can be used for months, repeatedly. The industrial pump transports approximately three gallons of oil per minute to the centrifugal filtration system, where real-time de-sludging of oil happens.

The EverClean 2 is a revolutionary new product that solves one of the age-old problems of oil contamination in Slab Saws. With the cost of oil running \$15-\$20/gallon, it can be very costly to do an oil change on your saw, not to mention that cleaning a saw is an undesirable dirty task. By cleaning the oil as you cut, the oil can be used for many years and reduces the wear on the internal components as well.

We at Highland Park Lapidary want to thank you for selecting the Model EC2 Everclean 2 Oil Cleaning System. We are confident that you will be pleased with your purchase. Highland Park Lapidary takes pride in producing the top quality and most dependable products for both hobby and commercial lapidary users throughout the world. Operated correctly, your Model EC2 Everclean 2 Oil Cleaning System will provide you with years of quality service.

To help familiarize you with the features, maintenance and safe operation of the machine, we have included this owner's manual. Please take the time to familiarize yourself with the Model EC2 by reading and understanding this manual. If you should have questions concerning your Model EC2, please feel free to call our Customer Service staff at 512-348-8528

Table Of Contents

Product Safety	1
Specifications	3
Setting Up Your Machine	3
Installing the Everclean II on an Everclean-ready Highland Park Lapidary saw	4
Installing the Everclean II on a non-Everclean-Ready Saw	7
Mounting the Everclean Main Unit	7
Bulkhead Fitting Installation	8
Connect the Pump Power supply	10
Install/Change the collection Canister	10
Connect The Everclean To The Power Outlet	11
Add Cool Cut Mineral Oil To Your Saw	11
Testing Your Everclean	11
Running your Everclean	12
Maintaining Your Machine	12
General Cleaning.....	12
Inspect the Wiring.....	12
Warranty Coverage	13
Troubleshooting	14
Exploded Views & Parts Lists	15

Safety Precautions

Read and follow all safety, operating and maintenance instructions before using this equipment. Failure to read, understand and follow these instructions could result in injury or death to you or others. Failure to read, understand and follow these instructions could also result in damage and/or reduced equipment life.

EYE PROTECTION

Safety glasses should always be worn when operating this machine. Regular eyeglasses do not provide proper protection and may not prevent eye injury - they are NOT safety glasses.

PROTECT YOUR LUNGS

An NIOSH certified dual cartridge respirator for dust and oil (P95) should be always worn when running the machine because oil mist can be hazardous to your health. While mineral oil is not toxic to handle, inhaling oil mist into your lungs can cause respiratory health problems which is why we recommend always using a respirator when operating a slab saw and your Everclean unit.

LOOSE CLOTHING AND HAIR

To Prevent injury, never operate the Everclean 2 with the lid or any cover removed.

DO NOT OPERATE MACHINE WITH GUARDS REMOVED

To prevent injury, never operate the saw without the guards in place.

CONNECTING AND DISCONNECTING POWER

- **DISCONNECTING** The machine should always be disconnected before servicing.
- **CONNECTING - REDUCE THE RISK OF UNINTENTIONAL STARTS** Make sure the ON/OFF switch is in the OFF position before plugging in the machine.

ELECTRICAL SAFETY

- Never touch electrical wires while the motor is running. Exposed, frayed or worn electrical wiring and plugs can be sources of electrical shock that could cause severe injury or burns.
- If an extension cord is used, it must not be longer than 12 feet and must be at least 18 gauge wire with a ground.
- Use this tool only with the proper power source 120V 60 Hz.

- If the wiring becomes damaged or frayed, replace it immediately.
- Do not allow water to come in contact with electrical components, and do not connect or disconnect the power with wet hands.
- Disconnect the power before servicing the machine.

ROTATING OR MOVING PARTS

Keep hands, feet, hair, and clothing away from all moving parts to prevent injury. Never operate the motor with covers or lid removed.

KEEP WORK AREA CLEAN

- Cluttered work areas invite accidents. Keep your work area clean and organized.
- **DO NOT USE IN DANGEROUS OR HAZARDOUS ENVIRONMENTS** Do not operate equipment in dangerous or hazardous environments. Do not use power tools in damp or wet locations nor expose them to rain. Always keep the work area well lighted. Always work in a well ventilated area.
- **KEEP CHILDREN AWAY** All visitors and children should be kept a safe distance from the work area.

WORK METHOD

- **USE THE RIGHT TOOL TO SERVICE THE MACHINE** Do not force a tool or an attachment when servicing. Use the correct tools for service or adjustments.
- **DO NOT OVERREACH** Keep proper footing and balance at all times by not overreaching.
- **DO NOT OPERATE A TOOL WHEN TIRED** When tired, take a break and relax.
- **CHECK FOR DAMAGED OR WORN PARTS** Before using the machine, check for damaged parts or wires. A guard or any other part that is damaged or worn should be replaced.
- **USE RECOMMENDED ACCESSORIES AND PARTS** Consult the owner's manual for recommended accessories and parts. Using improper parts and accessories may increase the risk of personal and/or bystander injury.
- **USE ONLY RECOMMENDED COOLING AND LUBRICATING FLUIDS** (Pure Mineral Oil) Using Diesel, Kerosene or any other fluids besides pure mineral oil creates a risk of fire and personal injury/death.

MAINTAINING THE MACHINE

- **CHECK FOR DAMAGED OR WORN PARTS** Before using the machine, check for damaged parts or wires. A guard or any other part that is damaged or worn should be replaced. Regularly check moving parts for proper alignment or binding.
- **USE RECOMMENDED ACCESSORIES AND PARTS** Consult the owner's manual for recommended accessories and parts. Using improper parts and accessories may increase the risk of personal and/or bystander injury.

Specifications

Model	Model EC2
Shipping Weight	49 lbs
Machine Voltage	110V AC
Motor Power	200W
Motor Voltage	155VDC
Motor RPM	0-3000 RPM
Drum Capacity	½ Gallon
Cleaning Mechanism	Centrifugal Separation of mud from the oil
Housing	Heavy duty Cast Aluminum
Pump	Industrial pump with Brushless DC motor 1.5-2.5 GPM

Setting Up Your Machine

The Highland Park Model EC 2 Everclean 2 Oil Cleaning System has been carefully packaged for protection during transit from the factory to you. You should have the following when you unpack your unit:

Highland Park Model EC2 Everclean Cleaning System

Depending on the type of system you are installing on you will receive either the Turbo Pump TP-110 for installation directly on the saw, or the Freestanding pump MT0047 for installing in the Everclean Tank System or on the Highland Park Shaping Machine

Tools Needed

- 7/32" Allen Wrench
- Adjustable wrench
- Flat Blade Screwdriver
- Pliers or Channelocks

Unpacking the Everclean 2:

The Everclean 2 weighs approximately 49 lbs (22 kg). Take care when lifting the unit from the box to avoid improper lifting which might cause damage to the machine or cause personal injury.

Your Highland Park Model EC2 Everclean has been shipped from the factory thoroughly tested and inspected. Avoid using an extension cord, it's much safer to connect the machine directly to a wall power outlet.

INSTALLATION

The Everclean can be installed on most saws 16" and larger. On older Highland Park and Frantom machines the tanks are quite heavy duty and can easily support the Everclean. On saws with thinner sheetmetal like Covington or the Lortone 18" it is important to mount the unit closer to the corner of the saw, and in some cases it may be necessary to reinforce the tank to prevent sagging or vibration.

Installing The Everclean II On An Everclean-Ready Highland Park Lapidary Saw

1. If your machine has the built-in Everclean mount then you can remove the 4 screws that hold on the blank out plate on the front of the saw. **(It's important to note that the screws that hold the black out plate are very short and the screws that mount the Everclean to the saw are much longer, do not get the screws mixed up because the short screws will not properly hold the Everclean!)**



2. Put these screws back in the plate. It's a good idea to save this plate in case you ever remove the Everclean

for service; then, you can still run the saw without the Everclean being mounted.

3. Check that all 5 o-rings are in place on the mounting face of the Everclean.
4. Remove the 4 mounting screws from the mounting face of the Everclean and make sure the side of the tank where the Everclean is going to be mounted is clean. You will notice that these screws are longer than the screws that were used in the blank out plate. Do not get the screws mixed up and use the wrong screws as the short screws will not hold the Everclean on the Saw securely.
5. Hold the Everclean up to the side of the saw tank



and get the first screw started into the Everclean. **Do not cross-thread the screws – if the screw does not feel like it is going in smoothly, then do not force it!** It is a lot easier to do this if you have someone to help you hold the unit up while you are getting the screws started.

6. Install all four screws and then alternate tightening each screw until the gap between the saw tank and the Everclean is closed.
7. This will ensure that the o-rings are making a good seal on the face of the saw.
8. Now remove the plug from the lower right side of the saw.

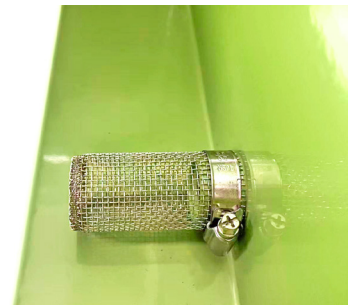


(if you have oil in your tank, then you can lift the right side of the saw and put blocks under the wheels to lower the oil level so you can install the pump without removing the oil, however, if your oil is very dirty, we strongly recommend that you drain the oil and clean the saw before installing)

9. With teflon tape on both ends of the Drop Tube Assembly, carefully begin to thread the pump onto the drop tubing fitting. This can be a little tricky ,so be very careful not to get the pump crossthreaded. Hold the pump securely and use a channellock plier or pipe wrench to tighten the drop tube into the pump until the droptube is straight up.
10. Now begin to thread the droptube and pump assembly into the fitting on the lower right side of the saw. Use a channellock plier or pipe wrench to tighten the fitting until it is pointing down as shown
11. Next, thread the valve assembly into the pump outlet port. Don't overtighten, and the final position of the valve should look like #13 at right:
12. Put the hose clamps on the hose and then insert the hose onto the outlet fitting of the pump and position the hose clamp and tighten it. Then put the other end of the hose on the fitting on the top of the Everclean. You may want to cut the hose to a shorter length, but leave it long enough that you can set it in the saw when you change the canister in the Everclean. Put the hose clamp in place and then tighten it.



Newer machines will come with an intake screen, but if you have an older unit, then we highly recommend getting and installing an intake screen.



Installing The Everclean II On A Non-Everclean Ready Saw

Installation Supplies Needed:

Before installing your EverClean unit you will need the following tools and supplies:

1. Safety Glasses
2. Electric drill
3. 3/8" drill bit
4. Large C-clamp
5. 2-3/8" hole saw
6. 1-1/4" hole saw
7. File or burr knife for removing sharp edges after drilling holes
8. Nipper pliers or crimping tool
9. Teflon tape
10. Allen wrenches
11. Wrench or channel locks for tightening 2" bulkhead fitting
12. Razor blade
13. Marking pencil or Sharpie



Mounting the Everclean Main Unit

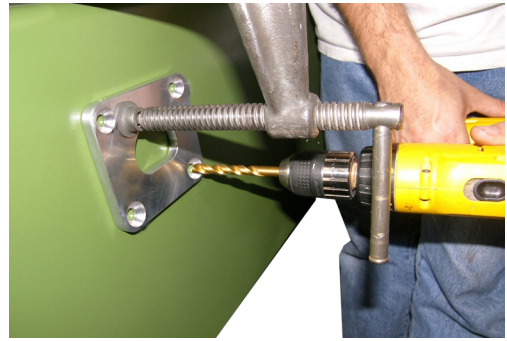
1. Drain the oil from the saw and clean out the sludge.
2. Clean the side of the saw where you want to mount the unit and make sure that the unit can be mounted without interfering with the operation of the saw.
3. On Highland Park saws the unit mounts the best on the right hand side about 8 inches back from the front edge of the tank and 2.5" down from the top edge of the tank.
4. Before drilling holes, hold the mounting flange inside the saw and make sure that the release handle will not hit the flange in the engaged or disengaged position when the carriage is moved front to back.

Important! The EverClean must be mounted above the saw oil level.

5. After determining the best position to mount the unit on your saw, use a black sharpie or marking pencil to mark the outside of the saw for drilling the main port hole.



6. Put the 2-3/8" hole saw in the drill and position the bit so it is matching the curve on the top side of the marking you just made.
7. Wearing safety glasses, drill the hole, then use the file or burr knife to remove all sharp edges and burrs.
8. Position the mounting flange plate on the outside of the saw so that the outlet port hole is centered as closely as possible. The center port hole should be unobstructed.
9. Clamp the mounting flange onto the tank making sure it is level. Then use the 3/8" drill bit to drill the 4 mounting holes. **Make sure that the mounting flange does not shift during drilling, as this will cause misalignment in the mounting holes!**
10. Use the file or burr knife to remove all sharp edges and burrs, and then check the surface to make sure there are no pits or deep scratches. If you do find some, this can cause the O-ring seals to leak, but can be remedied by applying a small amount of automotive silicon gasket sealant when installing the unit.
11. Place the mounting flange on the inside of the tank and match up the EverClean main housing with O-rings on the outside of the tank. Use the four 3/8" diameter bolts to securely mount the unit. Make sure that all 5 O-rings are in their grooves before bolting the unit on. Tighten the bolts with an Allen wrench until the flange face is seated fully against the side of the saw.

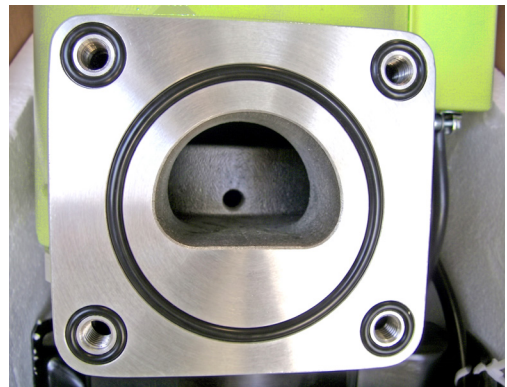


Bulkhead Fitting Installation

1. The Bulkhead fitting allows the pickup to be easily connected to the pump. To determine the best location place the pickup inside the saw near the back of the blade.

Select a location for the bulkhead fitting; generally 3-4" forward of the arbor shaft on the right hand side is good on most saws.

- Hint: It is best to keep the pickup line length as short as possible for best flow.
2. On the outside of the tank, mark the location for where the bulkhead fitting hole will be drilled.

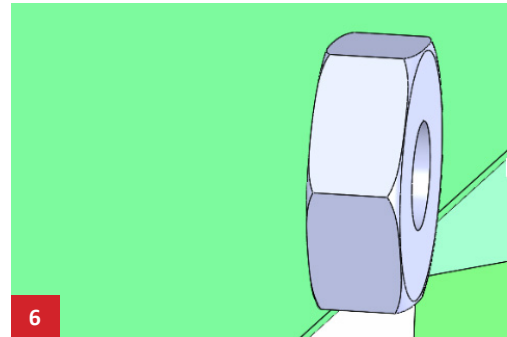


IMPORTANT! The hole must be 1-1/2" to 2" up from the bottom edge of the tank so the nut can be turned without hitting the bottom of the tank. Also, be sure the hole is BELOW the saw oil level in order to have the pickup, pickup tube and pump below the oil level. Otherwise the pump will NOT work.

- Make sure to place the fitting high enough that there is enough room to turn the bulkhead nut inside the tank for tightening it (#6).
3. Using the 1-1/4" hole saw, drill the hole. Use a file or burr knife to remove all sharp edges and burrs. Check the surface for any pits or deep scratches and use silicon gasket sealant where necessary before installing the bulkhead fitting.
 4. With teflon tape on both ends of the Drop Tube Assembly, carefully begin to thread the pump onto the drop tubing fitting. This can be a little tricky, so be very careful not to get the pump crossthreaded. Hold the pump securely and use a channellock plier or pipe wrench to tighten the drop tube into the pump until the droptube is straight up. (photo)
 5. Now begin to thread the droptube and pump assembly into the bulkhead fitting. Use a channellock plier or pipe wrench to tighten the fitting, then install the bulkhead fitting into the tank so the drop tube assembly is vertical and tighten the nut to compress the oring so the fitting is flush with the outside of the tank.
 6. Next, thread the valve assembly into the pump outlet port. Don't overtighten, and the final position of the valve should look like the diagram at right.
 7. Put the hose clamps on the hose and then insert the hose onto the outlet fitting of the pump and position the hose clamp and tighten it. Then, put the other end of the hose on the fitting on the top of the Everclean. You may want to cut the hose to a shorter length, but leave it long enough that you can set it in the saw when you change the canister in the Everclean. Put the hose clamp in place and then tighten it.
 8. Install the intake screen onto the bulkhead fitting.



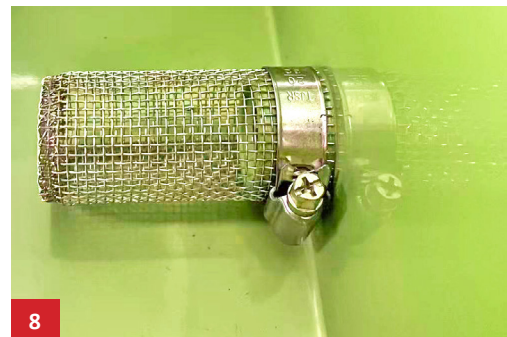
7a



6



7b



8

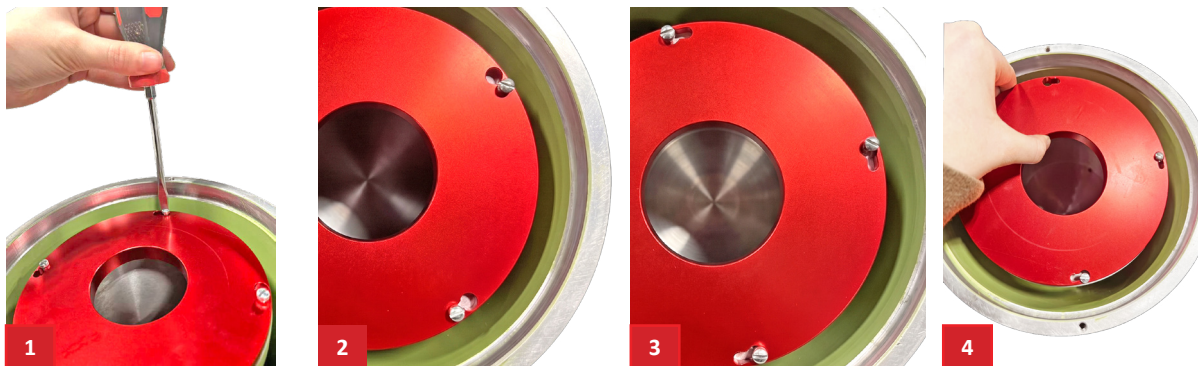
Connect the Pump Power supply

- Insert the plug for the power adapter into the connector on the pump motor
- Plug the power adapter into the back of the Everclean.



Install/Change the collection Canister

1. Remove the top lid of the Everclean by removing the two red thumbscrews.
2. Loosen the 4 screws that hold the inner drum lid on the drum.
3. (The screws do not need to be removed) Rotate the drum lid clockwise so the screws can pass through the slots, it may help if you put your finger on the head of the screw so you can rotate the lid more easily into position to remove it.
4. Lift the drum lid off.



5. The full canister can be removed now by gripping the top edge of the canister and pulling it up. Wipe any excess mud out of the drum, and then insert a new canister.
6. Replace the inner drum lid, rotate it counter-clockwise and then tighten the 4 screws to secure it in place.
7. Do not overtighten these screws. Make sure that the lid is centered in the drum and sits flush on the top of the drum. If it's not positioned properly then it can result in causing the unit to vibrate during operation.

Replace the outer lid, you will notice that it will be a bit snug as the lid oring gets compressed. You can use a soft rubber mallet to get the lid into place flush with the main Everclean body. Then replace the two red thumbscrews, tighten them finger tight.



Connect The Everclean To The Power Outlet

- Check that the power switch is in the OFF position.
- Plug the power cord from the machine to the power outlet.

Add Cool Cut Mineral Oil To Your Saw

- Add mineral oil to your saw to the proper level. Make sure that the pump intake screen is covered. (We strongly recommend that you use Highland Park Cool Cut Mineral Oil with 6-7 cst viscosity. Thicker oils do not pump as well and also the removal of dirt from the oil is optimized when using 6-7cst viscosity mineral oil.

Testing Your Everclean

- Move the power switch to the ON position to start the rotation of the drum. The drum may start spinning but if the speed is turned all the way down then you will need to turn the speed control knob clockwise to increase the drum speed. In general you will want to run the Everclean unit at the fastest speed for the optimal cleaning action.

NOTE: Do not run the pump dry, this will diminish the life of the internal seal

Running your Everclean

- You are now ready to run your Everclean II System! In general you will want to run the Everclean II on the fastest speed possible. Sometimes a vibration may develop at the highest speed, and to eliminate this you can adjust the speed down just a little until the harmonic vibration stops.
- If vibration persists, then turn the unit off and check for proper installation of the inner drum lid.
- Sometimes if the saw is turned off for a period of time and the canister is not full, the mud inside the canister may slump down and create an imbalance, in this case, just clean out the canister and replace and then restart the unit.



Maintaining Your Machine

Your Highland Park Model Everclean II has been designed to require minimal maintenance.

General Cleaning

With use, your Highland Park Model Everclean II may get some dust and oil residue on it. Keeping your machine clean is a good way to keep it looking great and avoid issues. Unplug the Everclean before wiping it down. You can use a mild cleaning solution like 409 or simple green, but don't spray the cleaner directly on the machine, but instead spray the solution on your cleaning rag and then use the rag to wipe the surfaces of the machine.

Inspect the Wiring

Periodically it's a good idea to inspect the machine wiring, any cracked or damaged wires should be replaced immediately.

Warranty Coverage

Machines, Polishers, Diamond Blades & Core Bits and Motors

Highland Park warrants to the original purchaser for a period of one year except as noted, from the date of purchase all products covered by this Warranty to be free of defects in materials and workmanship. This warranty is non-transferable and applies only to the original purchaser.

This Warranty shall not apply to any parts that have been subjected to misuse or improper service, that had been damaged in transit or handling, or that have been altered or repaired by unauthorized representatives. This Warranty does not cover defects caused by or resulting from misuse, abuse, neglect, or damage caused by accident or the failure to provide reasonable maintenance. This Warranty is void if the product or any of its individual components is altered or modified by the purchaser or if the product is used in a manner or with a blade not recommended by the manufacturer.

Any claim arising under this Warranty must be submitted by the original purchaser within the warranty period specified above and shall include proof of purchase. During said warranty period Highland Park shall, at its option, either replace or repair, at no charge to the original purchaser, any parts or components that are found to be defective by Highland Park. Highland Park shall not be responsible for or obligated to pay for freight or other transportation-related costs or expenses in connection with any defective products or components that are either returned to Highland Parks facility or any authorized repair station and/or any replacement products or components that are shipped from Highland Park pursuant to this Warranty.

Parts and labor needed to maintain products and the replacement of components due to normal use are the purchaser's responsibility and are not covered by this Warranty. All products or components replaced under warranty become the property of Highland Park. All replacement parts will be considered to be part of the original product and any warranty on such parts will expire coincidentally with the original Warranty. Replacement part(s) installed by anyone else will be provided without a charge for such replacement part(s), but this Warranty will not apply to labor charges in connection therewith.

IN NO EVENT SHALL ANY LIABILITY UNDER THIS WARRANTY EXCEED THE REPLACEMENT COST OF ANY DEFECTIVE PRODUCT OR COMPONENT THEREOF, AND HIGHLAND PARK SHALL NOT BE LIABLE FOR ANY INCIDENTAL OR CONSEQUENTIAL DAMAGES OR FOR ANY OTHER DAMAGE OR LOSS NOT EXPRESSLY ASSUMED AS SET FORTH HEREIN.

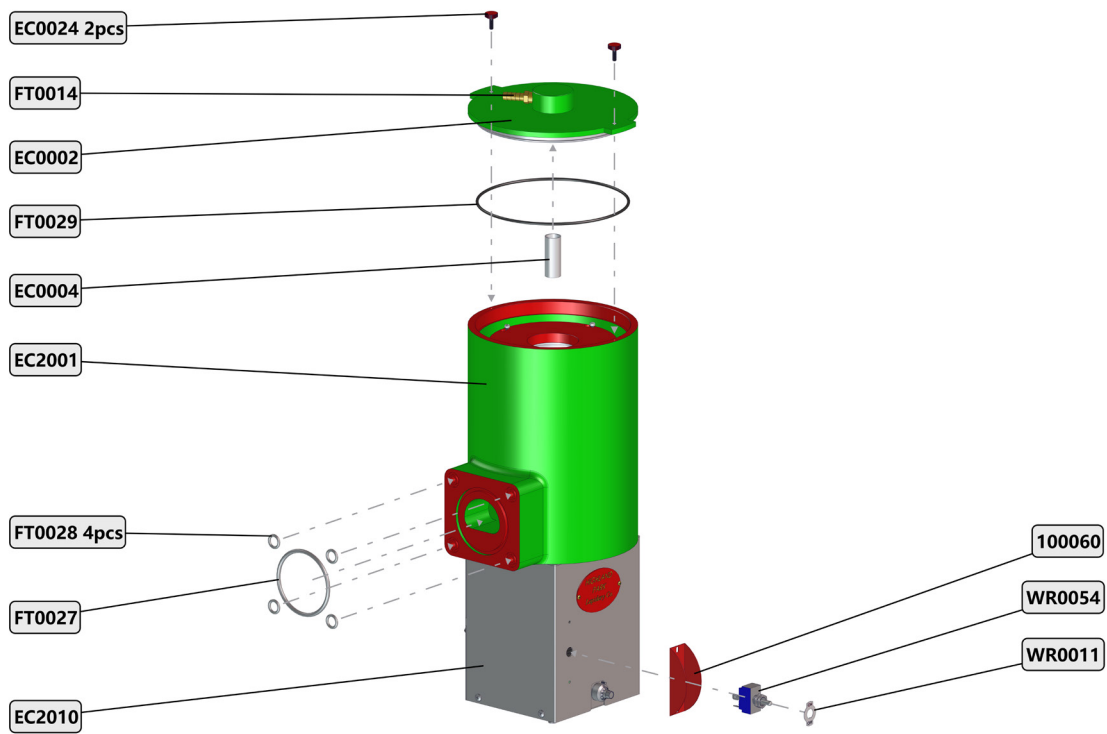
The foregoing constitutes an expressed warranty on the terms set forth above and is the only warranty or warranties applicable to the products it covers. All other warranties, including, without limitation, the implied warranty of merchantability and/or fitness for a particular purpose or use being denied. This limited warranty is expressly in lieu of all other warranties, whether expressed or implied.

Troubleshooting

ISSUE	SOLUTION
Parts are missing or something was damaged during shipment.	Contact us directly at 512-348-8528.
Motor wont start	<ol style="list-style-type: none"> 1. Make sure to check to see that the outlet or extension cord you are plugged into has power. Plugging a lamp into the power source is a good way to check this. 2. Make sure that the speed control has been turned up clockwise enough. 3. Call Customer Service for Technical support
Unit Vibrates when running	<ol style="list-style-type: none"> 1. Adjust the speed slightly to see if the harmonic vibration stops. 2. Check the inner drum lid for proper installation. If it's not centered or not flush with the top of the drum it can cause vibration. 3. Mud inside the canister has slumped down causing uneven weight distribution in the canister. Clean out the canister, replace and retry. 4. Vibration persists, contact Customer Support.
Oil flow is low to the Everclean Unit	<ol style="list-style-type: none"> 1. The pickup screen is not fully submerged and air is getting pulled into the pump. Add oil to the saw until the screen is submerged. 2. Oil is too thick. Vet grade and food grade mineral oils are quite thick and get even thicker in cold weather. Change the oil or warm it up 3. If you don't have a pickup screen, then it's possible you have a rock chip that got into the pump and is stopping or slowing the impeller. Open the bottom of the pump and check for chips and make sure there are not missing vanes on the impeller.

Exploded Views & Parts Lists

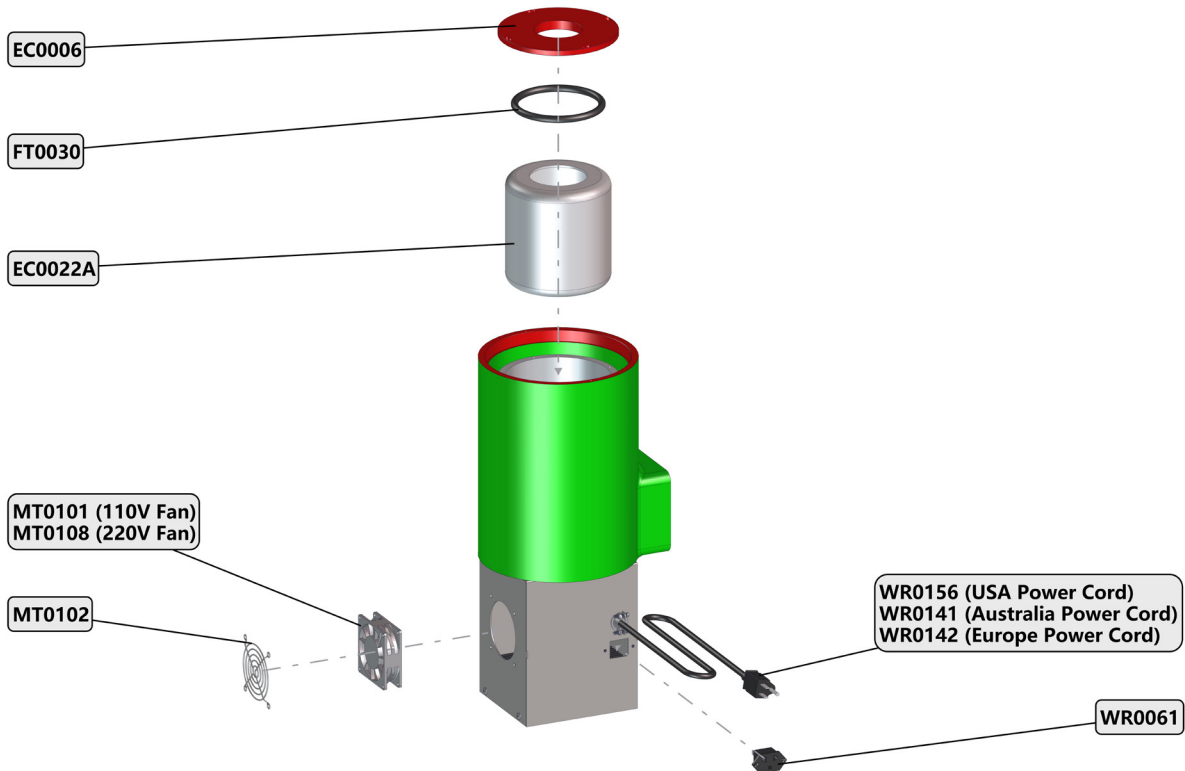
EC2 PARTS LIST 1



Part Number	Description	Quantity
100060	Toggle Switch Guard	1
EC0002	SS 0.5G Top Lid	1
EC0004	EC Lid Tube	1
EC0024	EverClean Lid Thumb Screw Assembly	2
EC2001	SS 0.5G New Main Housing	1
EC2010	EC2 Control Box Assembly	1
FT0014	1/4 NPT Male to 10 mm Barb	1
FT0027	Everclean Bulkhead Mounting Center Oring	1
FT0028	Everclean Bulkhead Mounting Bolt Oring	4

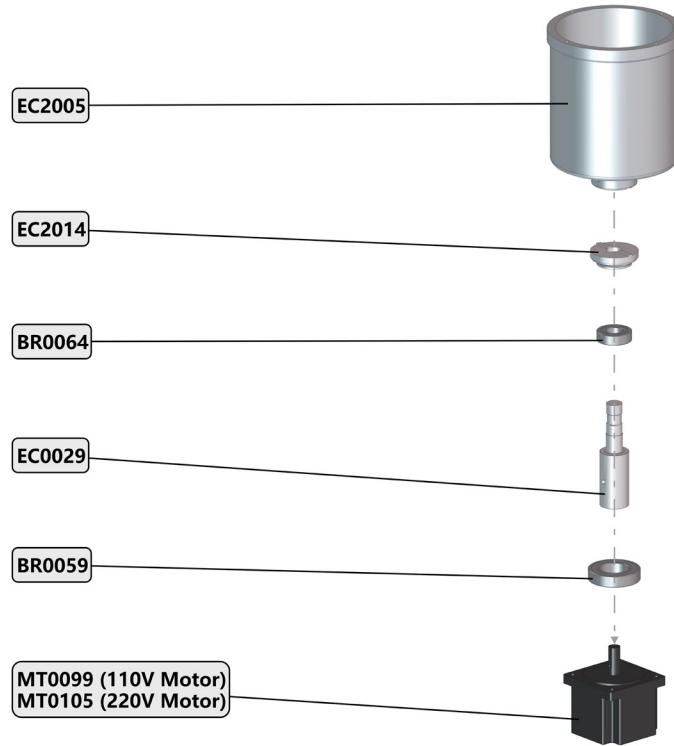
FT0029	183mm ID x 3.5mm EverClean Top Lid Oring	1
WR0011	On Off Switch Plate	1
WR0054	Heavy Duty Toggle Switch	1

EC2 PARTS LIST 2



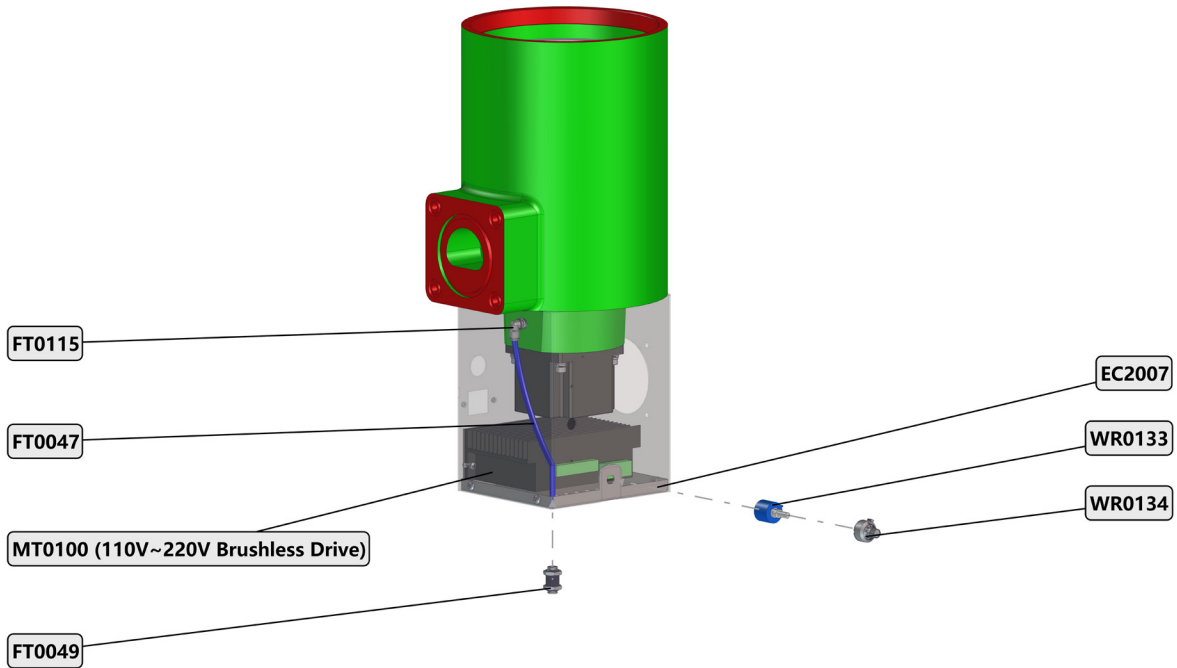
Part Number	Description	Quantity
EC0006	SS 0.5G Drum Lid	1
EC0022A	Mud Bucket	1
FT0030	100 ID mm*10 mm Everclean Inner Lid Oring Seal	1
MT0101	110V Cooling Fan	1
MT0102	Muffin Fan Guard For 3.15(80mm) Fan	1
MT0108	220V Cooling Fan	1
WR0061	3 Pin 110V Straight-Blade Receptacle	1
WR0141	Australia Power Cord	1
WR0142	Europe Power Cord	1
WR0156	USA Power Cord	1

EC2 PARTS LIST 3



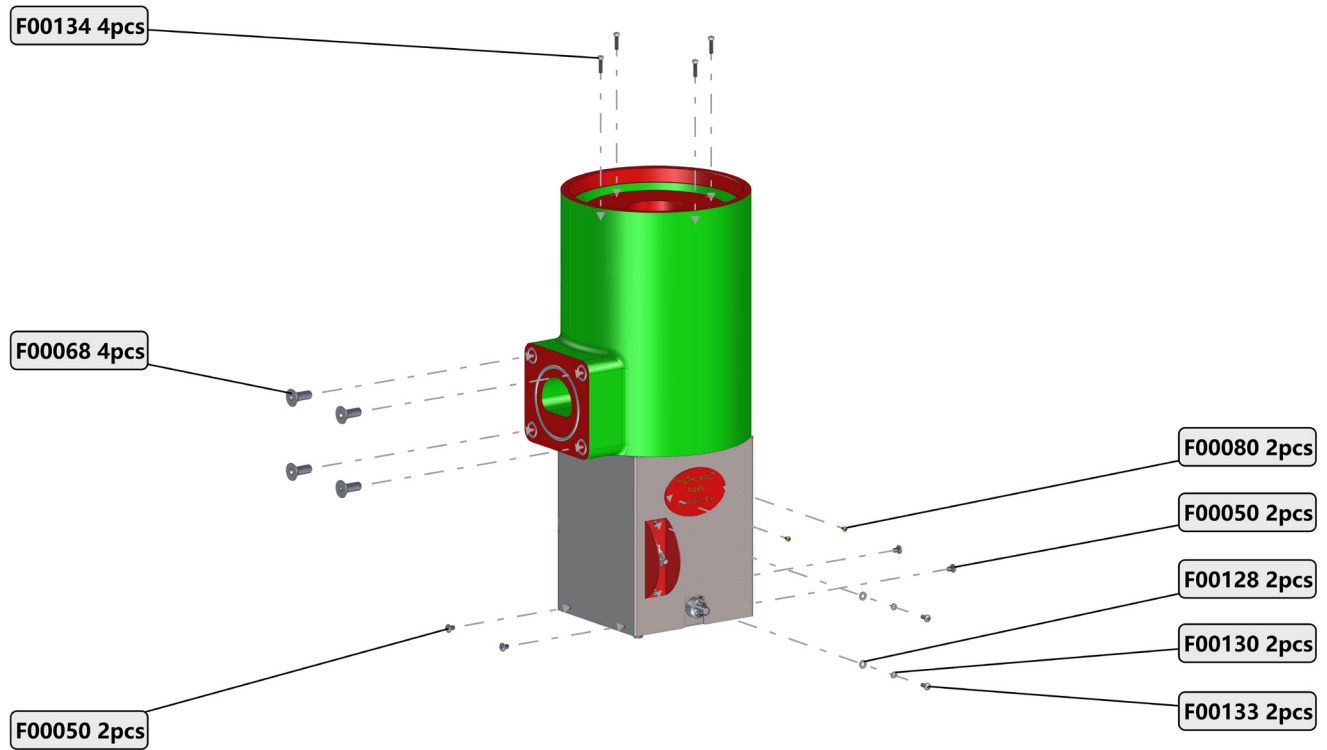
Part Number	Description	Quantity
BR0059	Lower Bearing 6007-2RS 35mm x 62mm x 14mm	1
BR0064	6004DU Bearing	1
EC0029	Interconnect Shaft	1
EC2005	SS 0.5G New Drum	1
EC2014	EC2 Labyrinth Seal Assembly	1
MT0099	110V 4000RPM Brushless Motor	1
MT0105	220V 4000RPM Brushless Motor	1

EC2 PARTS LIST 4



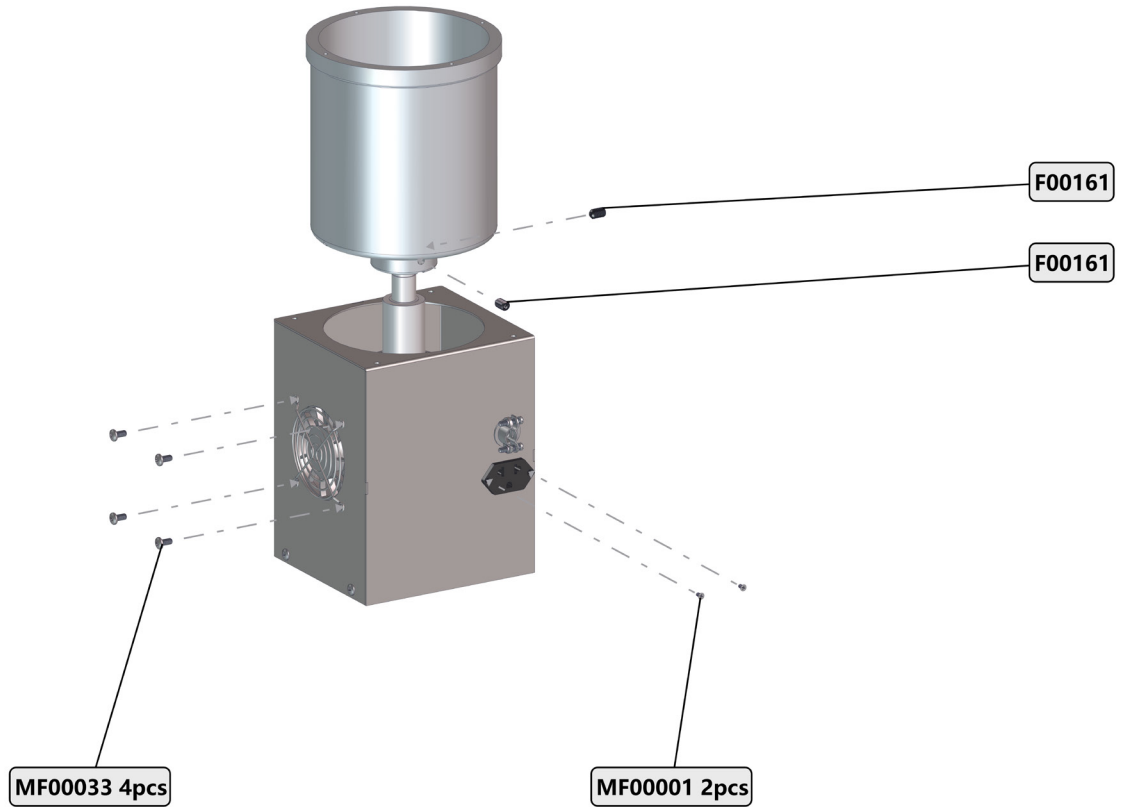
Part Number	Description	Quantity
EC2007	Control Box Bottom Assembly	1
FT0047	6mm Poly Tube	1
FT0049	Bulkhead Fitting	1
FT0115	1/8 NPT Male to 6mm QD Elbow	1
MT0100	Brushless Drive	1
WR0133	10K ohm Potentiometer	1
WR0134	Potentiometer Turn Counter Knob	1

EC2 SCREWS & FASTENERS 1



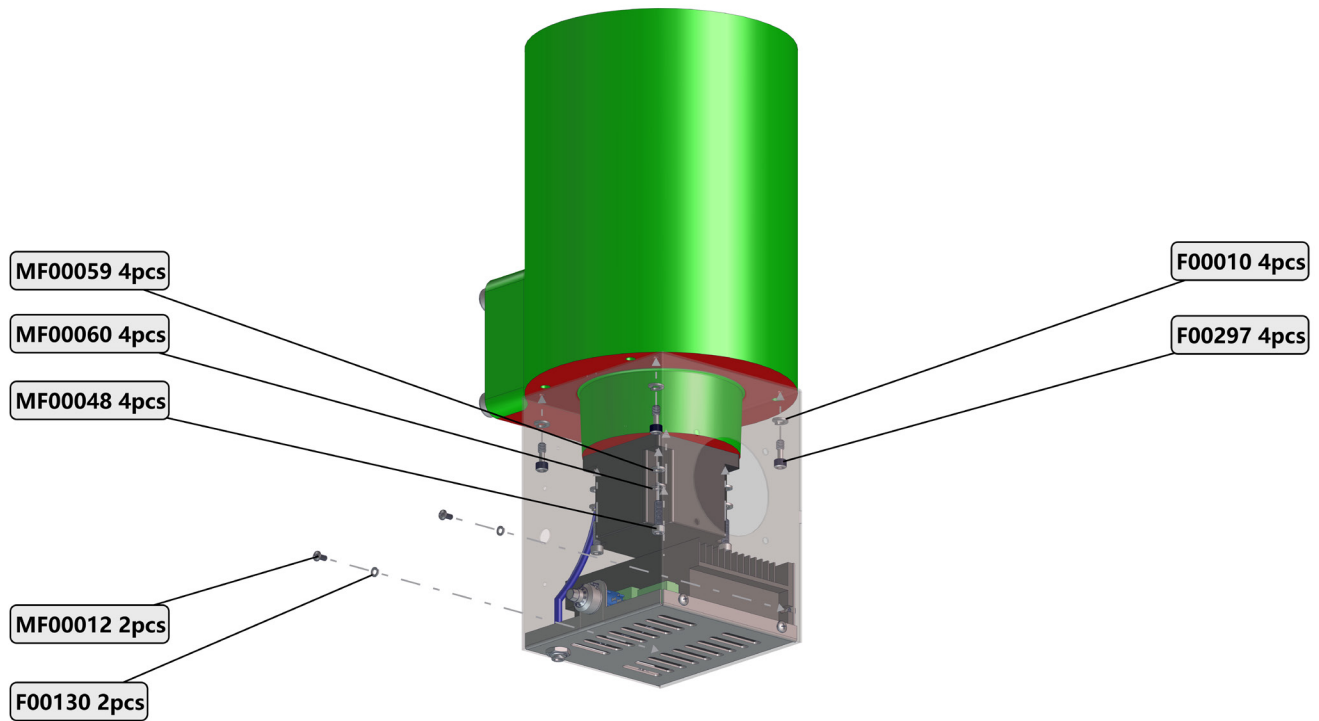
Part Number	Description	Quantity
F00050	10-32 x 1/4" PHP Pan Head Phillips 304SS	4
F00068	3/8-16 x 1 FHSCS Flat Head Socket Cap Screw	4
F00080	4-40 3/16" PHP Pan Head Phillips Brass	2
F00128	8-32 Flat Washer 304SS	2
F00130	8-32 Lock Washer 304SS	2
F00133	8-32 x 3/8" PHP Pan Head Phillips 304SS	2
F00134	8-32 x 5/8 Fillister Head Screw	4

EC2 PARTS LIST 4



Part Number	Description	Quantity
F00161	5/16-18 x 1/2 inch Set Screw	2
MF00001	M3-0.5 x 6mm FHP Flat Head Phillips SS304	2
MF00033	M5-0.8 x 10mm PHP Pan Head Phillips SS304	4

EC2 SCREWS & FASTENERS 3



Part Number	Description	Quantity
F00010	1/4-20 Lock Washer	4
F00130	8-32 Lock Washer 304SS	2
F00297	1/4-20 x 5/8"PHP Pan Head Phillips Captive Panel Screw 304SS	4
MF00012	M4-0.7 x 8mm PHP Pan Head Phillips SS304	2
MF00048	M6-1.0 x 20mm SHCS Socket Head SS304	4
MF00059	M6-1.0 Flat Washer	4
MF00060	M6-1.0 Lock Washer SS304	4

Model EC2: Everclean 2 Oil Cleaning System Owner's Manual & Operating Instructions







www.hplapidary.com

CONTACT US

info@hplapidary.com
512-348-8528

FOLLOW US

-  Highland Park Lapidary Co.
-  @hplapidary
-  Highland Park Lapidary
-  @highlandparklapidary

LIFE'S TOO SHORT TO CUT UGLY ROCKS!

HIGHLAND PARK LAPIDARY
LIVE EVENTS

Mondays, Wednesdays, Thursdays
Fridays and Saturdays
Starts at 7:00 PM EST

